



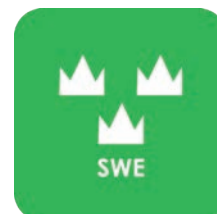
— WE CREATE MOBILE WORKPLACES —

VOLKSWAGEN

Caddy, ID.Buzz, Transporter, Crafter & Amarok



SAFETY



QUALITY



WARRANTY

VW CADDY CARGO

For price information, mounting time and content in our van racking packages, scan the QR code on the first page.

On electric and hybrid vans we recommend mounting by an experienced installer. Batteries and cable harnesses for approximately 400 volt must be taken in consideration. Cost of a floor may be added.



Art.No	Length	Depth	Height	Kg	CO ₂
F42200	1149	300	890	23	18



Art.No	Length	Depth	Height	Kg	CO ₂
F42201	848	300	890	17	14



Art.No	Length	Depth	Height	Kg	CO ₂
F42202	1149	300	1000	39	43



Art.No	Length	Depth	Height	Kg	CO ₂
F42203	804	300	1000	36	46



Art.No	Length	Depth	Height	Kg	CO ₂
F42204	1239	300	1075	48	48



Art.No	Length	Depth	Height	Kg	CO ₂
F42205	804	300	1000	48	62



Art.No	Length	Depth	Height	Kg	CO ₂
F42214			250	77	118



Art.No	Length	Depth	Height	Kg	CO ₂
F42217			470	89	133

VW CADDY CARGO MAXI

For price information, mounting time and content in our van racking packages, scan the QR code on the first page.

On electric and hybrid vans we recommend mounting by an experienced installer. Batteries and cable harnesses for approximately 400 volt must be taken in consideration. Cost of a floor may be added.



Art.No	Length	Depth	Height	Kg	CO ₂
F42220	1572	300	890	28	20



Art.No	Length	Depth	Height	Kg	CO ₂
F42221	1061	300	890	23	18



Art.No	Length	Depth	Height	Kg	CO ₂
F42222	1631	300	1000	50	53



Art.No	Length	Depth	Height	Kg	CO ₂
F42223	1107	300	890	39	47



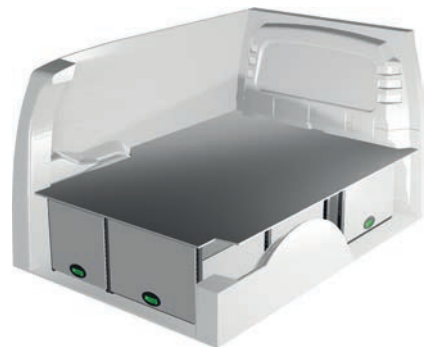
Art.No	Length	Depth	Height	Kg	CO ₂
F42224	1631	300	1075	62	64



Art.No	Length	Depth	Height	Kg	CO ₂
F42225	1107	300	890	53	69



Art.No	Length	Depth	Height	Kg	CO ₂
F42234			250	91	109



Art.No	Length	Depth	Height	Kg	CO ₂
F42237			470	103	120

VW ID. BUZZ CARGO

For price information, mounting time and content in our van racking packages, scan the QR code on the first page.

On electric and hybrid vans we recommend mounting by an experienced installer. Batteries and cable harnesses for approximately 400 volt must be taken in consideration. Cost of a floor may be added.



Art.No	Length	Depth	Height	Kg	CO ₂
F42250	1483	300	890	23	20



Art.No	Length	Depth	Height	Kg	CO ₂
F42251	971	300	890	19	19



Art.No	Length	Depth	Height	Kg	CO ₂
F42252	1452	300	890	41	51



Art.No	Length	Depth	Height	Kg	CO ₂
F42253	894	300	890	37	47



Art.No	Length	Depth	Height	Kg	CO ₂
F42254	1483	300	890	41	47



Art.No	Length	Depth	Height	Kg	CO ₂
F42255	894	300	890	48	63



Art.No	Length	Depth	Height	Kg	CO ₂
F42261			250	91	109



Art.No	Length	Depth	Height	Kg	CO ₂
F42264			470	103	120

VW TRANSPORTER T7 L1

For price information, mounting time and content in our van racking packages, scan the QR code on the first page.

On electric and hybrid vans we recommend mounting by an experienced installer. Batteries and cable harnesses for approximately 400 volt must be taken in consideration. Cost of a floor may be added.



Art.No	Length	Depth	Height	Kg	CO ₂
F49300	1998	300	1000	38	26



Art.No	Length	Depth	Height	Kg	CO ₂
F49301	1061	300	1000	24	18



Art.No	Length	Depth	Height	Kg	CO ₂
F49302	1998	300	1000	56	51



Art.No	Length	Depth	Height	Kg	CO ₂
F49303	1107	300	1000	47	52



Art.No	Length	Depth	Height	Kg	CO ₂
F49304	1998	300	1140	65	74



Art.No	Length	Depth	Height	Kg	CO ₂
F49305	1107	300	1000	66	75



Art.No	Length	Depth	Height	Kg	CO ₂
F49310			250	119	126

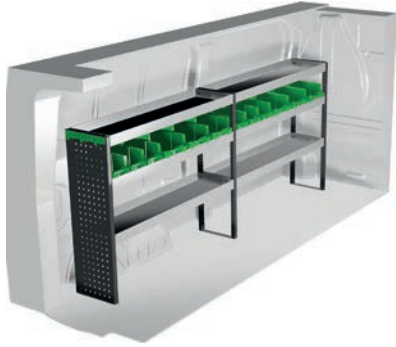


Art.No	Length	Depth	Height	Kg	CO ₂
F49313			470	122	144

VW TRANSPORTER T7 L2

For price information, mounting time and content in our van racking packages, scan the QR code on the first page.

On electric and hybrid vans we recommend mounting by an experienced installer. Batteries and cable harnesses for approximately 400 volt must be taken in consideration. Cost of a floor may be added.



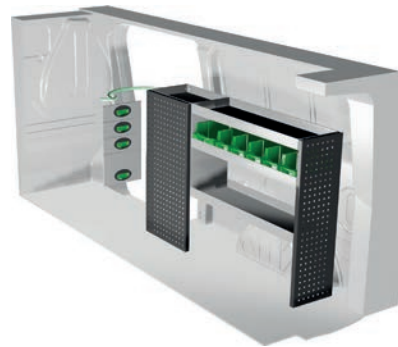
Art.No	Length	Depth	Height	Kg	CO ₂
F49320	2446	300	1000	44	20



Art.No	Length	Depth	Height	Kg	CO ₂
F49321	1453	300	1000	29	21



Art.No	Length	Depth	Height	Kg	CO ₂
F49322	2446	300	1000	62	47



Art.No	Length	Depth	Height	Kg	CO ₂
F49323	1499	300	1000	53	56



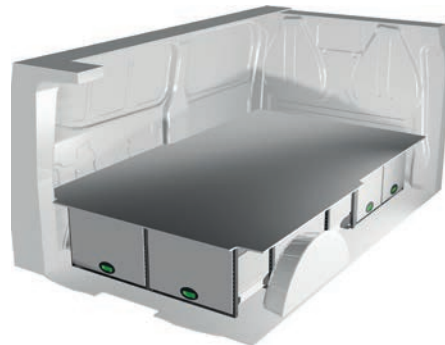
Art.No	Length	Depth	Height	Kg	CO ₂
F49324	2446	300	1140	70	66



Art.No	Length	Depth	Height	Kg	CO ₂
F49325	1499	300	1000	69	78



Art.No	Length	Depth	Height	Kg	CO ₂
F49332			250	135	139



Art.No	Length	Depth	Height	Kg	CO ₂
F49334			470	153	151

VW CRAFTER L3H3

For price information, mounting time and content in our van racking packages, scan the QR code on the first page.

On electric and hybrid vans we recommend mounting by an experienced installer. Batteries and cable harnesses for approximately 400 volt must be taken in consideration. Cost of a floor may be added.



Art.No	Length	Depth	Height	Kg	CO ₂
F41900	2779	300	1440	57	31



Art.No	Length	Depth	Height	Kg	CO ₂
F41901	1539	300	1440	60	47



Art.No	Length	Depth	Height	Kg	CO ₂
F41902	2779	300	1440	88	59



Art.No	Length	Depth	Height	Kg	CO ₂
F41903	1539	300	1440	74	62



Art.No	Length	Depth	Height	Kg	CO ₂
F41904	2904	470	1440	150	159



Art.No	Length	Depth	Height	Kg	CO ₂
F41905	1662	300	1735	87	83



Art.No	Length	Depth	Height	Kg	CO ₂
F41906	2869	300	1735	111	91



Art.No	Length	Depth	Height	Kg	CO ₂
F41907	1599	470	855	115	156

VW CRAFTER L4H3

For price information, mounting time and content in our van racking packages, scan the QR code on the first page.

On electric and hybrid vans we recommend mounting by an experienced installer. Batteries and cable harnesses for approximately 400 volt must be taken in consideration. Cost of a floor may be added.



Art.No	Length	Depth	Height	Kg	CO ₂
F41920	3474	300	1440	72	29



Art.No	Length	Depth	Height	Kg	CO ₂
F41921	2101	300	1440	73	57



Art.No	Length	Depth	Height	Kg	CO ₂
F41922	3596	300	1440	115	63



Art.No	Length	Depth	Height	Kg	CO ₂
F41923	2101	300	1440	112	100



Art.No	Length	Depth	Height	Kg	CO ₂
F41924	3565	470	1670	195	162



Art.No	Length	Depth	Height	Kg	CO ₂
F41925	2314	300	1440	151	121



Art.No	Length	Depth	Height	Kg	CO ₂
F41926	3597	300	1440	125	117



Art.No	Length	Depth	Height	Kg	CO ₂
F41927	2340	470	855	185	221

VW CRAFTER L5H3

For price information, mounting time and content in our van racking packages, scan the QR code on the first page.

On electric and hybrid vans we recommend mounting by an experienced installer. Batteries and cable harnesses for approximately 400 volt must be taken in consideration. Cost of a floor may be added.



Art.No	Length	Depth	Height	Kg	CO ₂
F41940	4110	300	1440	83	34



Art.No	Length	Depth	Height	Kg	CO ₂
F41941	2916	300	1440	87	63



Art.No	Length	Depth	Height	Kg	CO ₂
F41942	4187	300	1440	128	77



Art.No	Length	Depth	Height	Kg	CO ₂
F41943	2916	300	1440	133	115



Art.No	Length	Depth	Height	Kg	CO ₂
F41944	4136	470	1670	250	214



Art.No	Length	Depth	Height	Kg	CO ₂
F41945	2916	300	1440	165	130



Art.No	Length	Depth	Height	Kg	CO ₂
F41946	4098	300	1440	147	110



Art.No	Length	Depth	Height	Kg	CO ₂
F41947	2822	470	855	270	200

VW AMAROK

For price information, mounting time and content in our van racking packages, scan the QR code on the first page.

On electric and hybrid vans we recommend mounting by an experienced installer. Batteries and cable harnesses for approximately 400 volt must be taken in consideration. Cost of a floor may be added.



Art.No	Length	Depth	Height	Kg	CO ₂
F45211		250	66	105	



Art.No	Length	Depth	Height	Kg	CO ₂
F45213		470	75	117	



GENERALLY

The kits include what you see in the drawing as well as installation parts, rubber mats to all shelves and foam to the drawers.

System Edström Bilinredningar AB is certified according to SS-EN ISO 9001:2015 to secure the administrative quality and to give us the possibility to keep a high accuracy on deliveries.

All material used in System Edström can be recycled to 100%. We are also certified according to SS-EN ISO 14001:2015.



REMEMBER

Now that you have chosen to have System Edström in your vehicle you have taken the first and most important step to make your mobile workshop safe and functional. From here on it is up to you how safe and functional your working place will be.

Remember;
You as the driver has the full responsibility if you or any one else is injured if the cargo is poorly secured. It is also your responsibility to make sure that the interior is mounted in the safest way possible whatever your choice of workshop, even if they are professionals with knowhow and long experience.

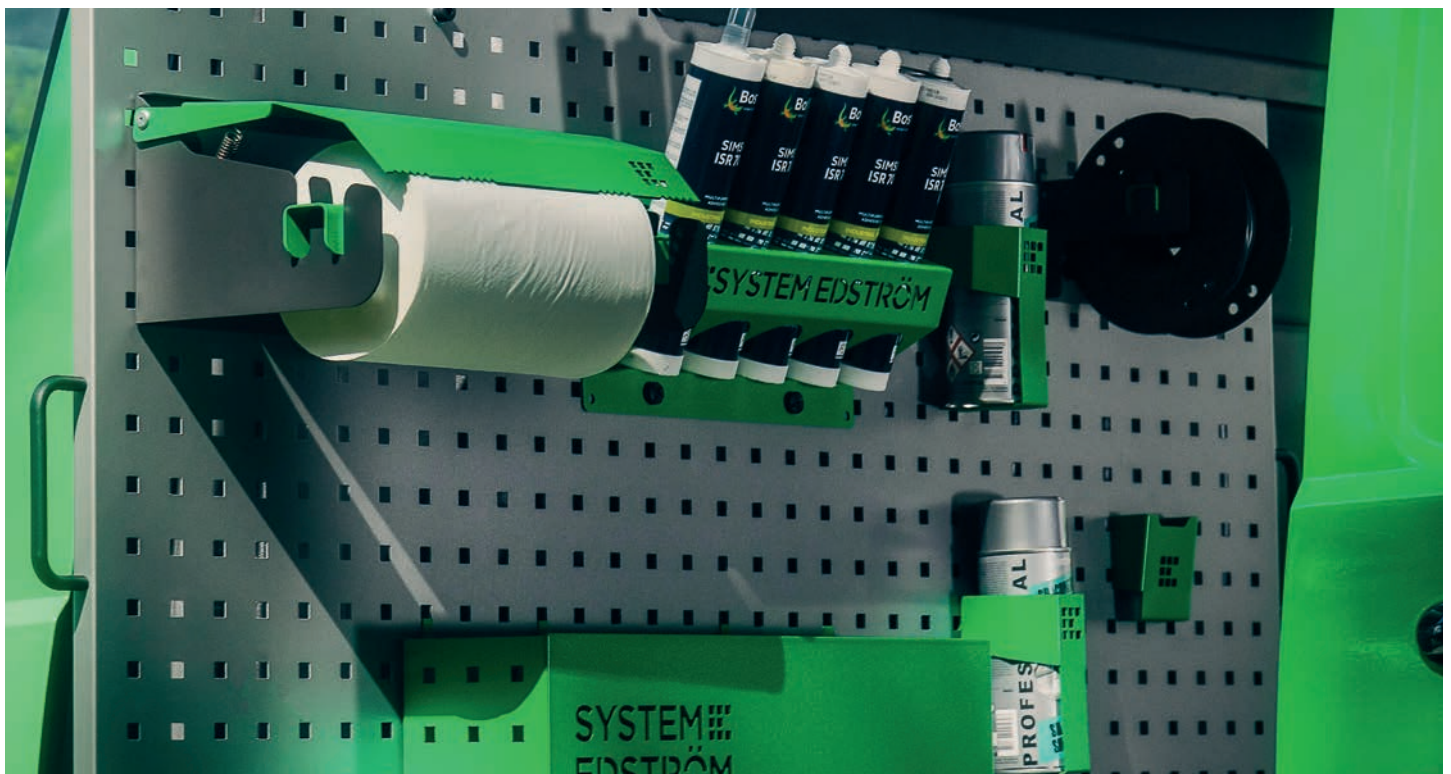


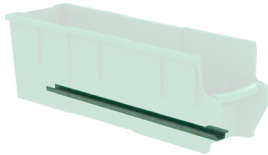
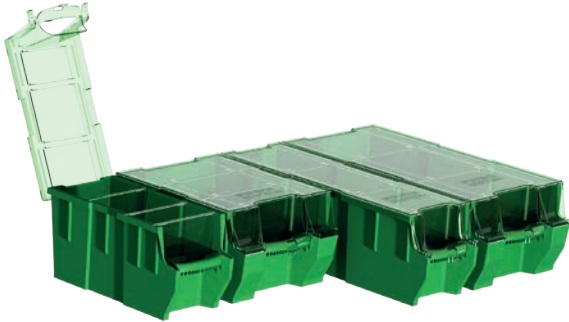
SECURITY

We crash test our racking continuously at VTI, the Swedish National Road and Transport Research Institute. The crash tests are carried out according to the standard INRS NS 286 which applies to van racking.

Other types of tests are also carried out at test institutes, for example shake tests that simulate several years of use on the road. We also carry out our own tensile and pressure tests, to check, for example, the strength of load securing products.

Find out more about our company and products at www.systemedstrom.com.





Plastic bin for shelves

Depth	Width	Height	Kg	Part.No
300	145	154	0,4	3050
300	235	154	0,5	3052
470	145	154	0,5	3055
470	235	154	0,5	3057

Transparent lid for plastic bins

Depth	Width	Fits	Kg	Part.No
300	150	3050	0,2	3060
300	240	3052	0,2	3062
470	150	3055	0,2	3065
470	240	3057	0,4	3067

Dividers for plastic bins

Width	Height	Fits	Part.No
140	154	3050, 55	3070
230	154	3052, 57	3072

Bracket for dropfront shelves

Depth	Kg	Part.No
300	0,1	3081
470	0,2	3082



Vice

Depth	Width	Height	Kg	Part.No
360	135	140	10,3	5004

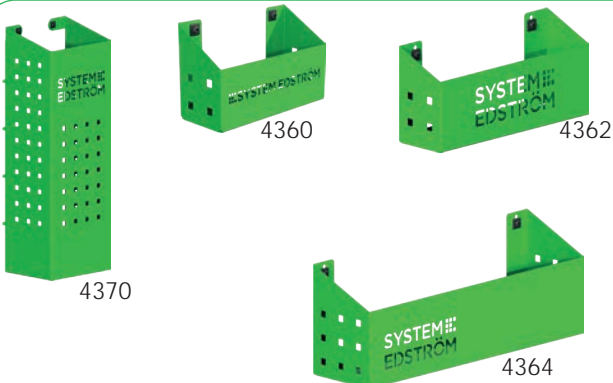
The forged vice is complete with pipe jaw and turning plate. Max opening 140 mm.



Vice Holders

Depth	Width	Height	⇒	Kg	Part.No
1110	170	195	600	9,4	5012
1110	170	80	600	8,9	5013

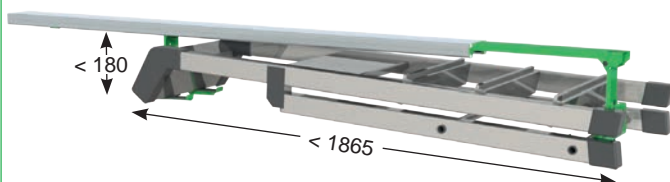
Plate measurement 170x158 mm. Cover 2950 is included.



Pegboard tray

Depth	Width	Height	Kg	Part.No
82	200	80	0,5	4360
82	285	102	0,8	4362
122	455	122	1,5	4364
153	179	575	3,0	4370

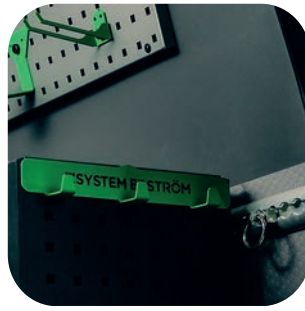
A number of different trays that solve (almost) all storage problems.



Internal ladder holder

Length	Kg	Part.No
2000	4,9	T9000

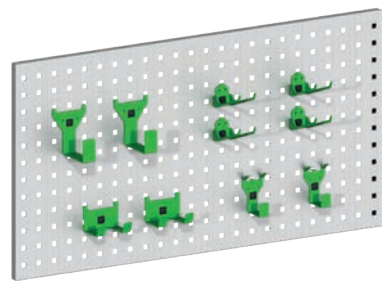
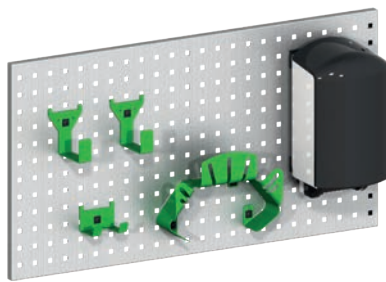
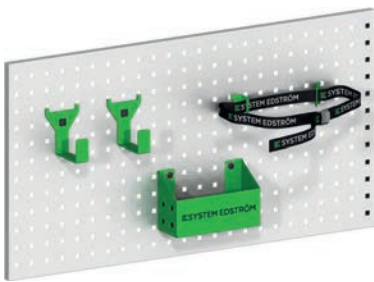
Store your ladder on the inside of the roof, pull it back to the rear door in a simple operation.



Accessory package No. 1

Accessory package No. 2

Accessory package No. 3



Art Nr

F11001

Pegboard not included.

Art Nr

F11002

Pegboard not included.

Art Nr

F11004

Pegboard not included.



WARRANTY



SAFETY



QUALITY

www.systemedstrom.com

SYSTEM EDSTRÖM

SYSTEM EDSTRÖM BILINREDNINGAR AB
Raseborgsgatan 11
164 74 Kista
Sweden

CONTACT
Order +46 (0)10 102 95 00
Sales +46 (0)10 102 95 01
Switchboard +46 (0)8 590 920 20
info@edstrom.se