



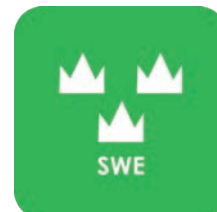
— WE CREATE MOBILE WORKPLACES —

RENAULT

Express, Kangoo, Trafic & Master



SAFETY



QUALITY



WARRANTY

RENAULT EXPRESS VAN

For price information, mounting time and content in our van racking packages, scan the QR code on the first page.

On electric and hybrid vans we recommend mounting by an experienced installer. Batteries and cable harnesses for approximately 400 volt must be taken in consideration. Cost of a floor may be added.



Art.No	Length	Depth	Height	Kg	CO ₂
F42300	1239	300	890	23	21



Art.No	Length	Depth	Height	Kg	CO ₂
F42301	848	300	890	18	19



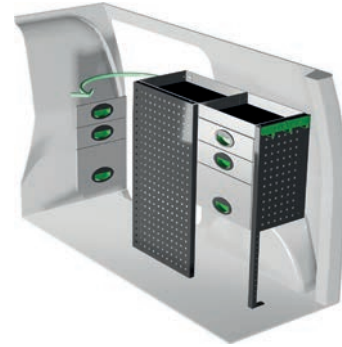
Art.No	Length	Depth	Height	Kg	CO ₂
F42302	1239	300	890	36	46



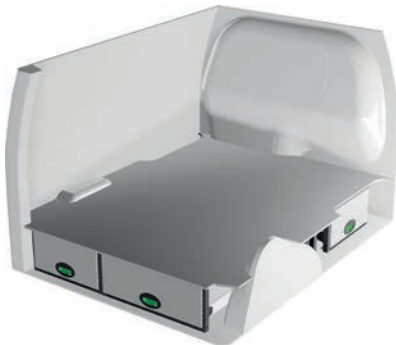
Art.No	Length	Depth	Height	Kg	CO ₂
F42303	894	300	890	36	47



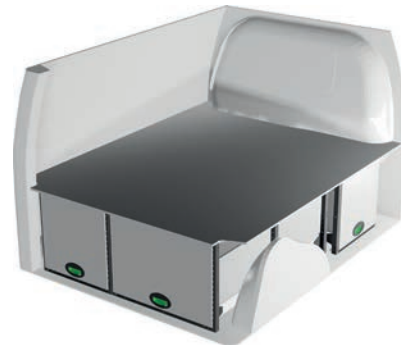
Art.No	Length	Depth	Height	Kg	CO ₂
F42304	1239	300	1075	49	62



Art.No	Length	Depth	Height	Kg	CO ₂
F42305	894	300	890	48	63



Art.No	Length	Depth	Height	Kg	CO ₂
F42313			250	77	119



Art.No	Length	Depth	Height	Kg	CO ₂
F42315			470	89	133

RENAULT KANGOO L1

For price information, mounting time and content in our van racking packages, scan the QR code on the first page.

On electric and hybrid vans we recommend mounting by an experienced installer. Batteries and cable harnesses for approximately 400 volt must be taken in consideration. Cost of a floor may be added.



Art.No	Length	Depth	Height	Kg	CO ₂
F42320	1239	300	890	23	21



Art.No	Length	Depth	Height	Kg	CO ₂
F42321	848	300	890	17	14



Art.No	Length	Depth	Height	Kg	CO ₂
F42322	1239	300	890	35	46



Art.No	Length	Depth	Height	Kg	CO ₂
F42323	804	300	890	36	45



Art.No	Length	Depth	Height	Kg	CO ₂
F42324	1239	300	890	49	55



Art.No	Length	Depth	Height	Kg	CO ₂
F42325	804	300	890	47	61



Art.No	Length	Depth	Height	Kg	CO ₂
F42334			250	77	118



Art.No	Length	Depth	Height	Kg	CO ₂
F42337			470	75	117

RENAULT KANGOO L2

For price information, mounting time and content in our van racking packages, scan the QR code on the first page.

On electric and hybrid vans we recommend mounting by an experienced installer. Batteries and cable harnesses for approximately 400 volt must be taken in consideration. Cost of a floor may be added.



Art.No	Length	Depth	Height	Kg	CO ₂
F42340	1631	300	890	28	23



Art.No	Length	Depth	Height	Kg	CO ₂
F42341	971	300	890	22	20



Art.No	Length	Depth	Height	Kg	CO ₂
F42342	1631	300	890	42	53



Art.No	Length	Depth	Height	Kg	CO ₂
F42343	894	300	890	36	47



Art.No	Length	Depth	Height	Kg	CO ₂
F42344	1572	300	890	52	47



Art.No	Length	Depth	Height	Kg	CO ₂
F42345	894	300	890	48	63



Art.No	Length	Depth	Height	Kg	CO ₂
F42351			250	89	106



Art.No	Length	Depth	Height	Kg	CO ₂
F42353			470	102	117

RENAULT TRAFIC L1H1

For price information, mounting time and content in our van racking packages, scan the QR code on the first page.

On electric and hybrid vans we recommend mounting by an experienced installer. Batteries and cable harnesses for approximately 400 volt must be taken in consideration. Cost of a floor may be added.



Art.No	Length	Depth	Height	Kg	CO ₂
F40840	1998	300	1000	34	23



Art.No	Length	Depth	Height	Kg	CO ₂
F40841	1107	300	1000	45	50



Art.No	Length	Depth	Height	Kg	CO ₂
F40842	1998	300	1220	63	53



Art.No	Length	Depth	Height	Kg	CO ₂
F40843	1107	300	1000	48	55



Art.No	Length	Depth	Height	Kg	CO ₂
F40844	1998	300	1000	42	48



Art.No	Length	Depth	Height	Kg	CO ₂
F40845	1147	300	1220	56	52



Art.No	Length	Depth	Height	Kg	CO ₂
F40856			250	101	153



Art.No	Length	Depth	Height	Kg	CO ₂
F40858			470	123	186

RENAULT TRAFIC L2H1

For price information, mounting time and content in our van racking packages, scan the QR code on the first page.

On electric and hybrid vans we recommend mounting by an experienced installer. Batteries and cable harnesses for approximately 400 volt must be taken in consideration. Cost of a floor may be added.



Art.No	Length	Depth	Height	Kg	CO ₂
F40860	2356	300	1220	48	27



Art.No	Length	Depth	Height	Kg	CO ₂
F40861	1530	300	1220	71	59



Art.No	Length	Depth	Height	Kg	CO ₂
F40862	2356	300	1000	58	68



Art.No	Length	Depth	Height	Kg	CO ₂
F40863	1500	300	1000	65	61



Art.No	Length	Depth	Height	Kg	CO ₂
F40864	2356	300	1220	55	46



Art.No	Length	Depth	Height	Kg	CO ₂
F40865	1500	300	1000	93	101



Art.No	Length	Depth	Height	Kg	CO ₂
F40876			250	118	152



Art.No	Length	Depth	Height	Kg	CO ₂
F40878			470	148	191

RENAULT MASTER L2H2

For price information, mounting time and content in our van racking packages, scan the QR code on the first page.

On electric and hybrid vans we recommend mounting by an experienced installer. Batteries and cable harnesses for approximately 400 volt must be taken in consideration. Cost of a floor may be added.



Art.No	Length	Depth	Height	Kg	CO ₂
F45600	2659	300	1440	61	33



Art.No	Length	Depth	Height	Kg	CO ₂
F45601	1453	300	1440	38	24



Art.No	Length	Depth	Height	Kg	CO ₂
F45602	2659	470	1440	110	85



Art.No	Length	Depth	Height	Kg	CO ₂
F45603	1409	300	1220	71	69



Art.No	Length	Depth	Height	Kg	CO ₂
F45604	2659	300	1440	108	82



Art.No	Length	Depth	Height	Kg	CO ₂
F45605	1300	470	920	90	127



Art.No	Length	Depth	Height	Kg	CO ₂
F45606	2750	470	1780	102	87



Art.No	Length	Depth	Height	Kg	CO ₂
F45607	1497	470	1780	58	51

RENAULT MASTER L3H2

For price information, mounting time and content in our van racking packages, scan the QR code on the first page.

On electric and hybrid vans we recommend mounting by an experienced installer. Batteries and cable harnesses for approximately 400 volt must be taken in consideration. Cost of a floor may be added.



Art.No	Length	Depth	Height	Kg	CO ₂
F45620	3230	300	1440	70	25



Art.No	Length	Depth	Height	Kg	CO ₂
F45621	1876	300	1440	47	26



Art.No	Length	Depth	Height	Kg	CO ₂
F45622	3295	470	1440	130	81



Art.No	Length	Depth	Height	Kg	CO ₂
F45623	1922	300	1440	87	65



Art.No	Length	Depth	Height	Kg	CO ₂
F45624	3295	300	1440	114	77



Art.No	Length	Depth	Height	Kg	CO ₂
F45625	2070	470	920	150	162



Art.No	Length	Depth	Height	Kg	CO ₂
F45626	3253	470	1780	126	51



Art.No	Length	Depth	Height	Kg	CO ₂
F45627	2145	470	1780	85	74

RENAULT MASTER L3H3

For price information, mounting time and content in our van racking packages, scan the QR code on the first page.

On electric and hybrid vans we recommend mounting by an experienced installer. Batteries and cable harnesses for approximately 400 volt must be taken in consideration. Cost of a floor may be added.



Art.No	Length	Depth	Height	Kg	CO ₂
F45640	3230	300	1795	84	46



Art.No	Length	Depth	Height	Kg	CO ₂
F45641	1876	300	1795	55	38



Art.No	Length	Depth	Height	Kg	CO ₂
F45642	3295	470	1795	152	112



Art.No	Length	Depth	Height	Kg	CO ₂
F45643	1922	300	1905	100	86



Art.No	Length	Depth	Height	Kg	CO ₂
F45644	3295	300	1905	129	97



Art.No	Length	Depth	Height	Kg	CO ₂
F45645	2070	470	920	161	181



Art.No	Length	Depth	Height	Kg	CO ₂
F45646	3253	470	1780	126	51



Art.No	Length	Depth	Height	Kg	CO ₂
F45647	2145	470	1780	83	72

INFORMATION



GENERALLY

The kits include what you see in the drawing as well as installation parts, rubber mats to all shelves and foam to the drawers.

System Edström Bilinredningar AB is certified according to SS-EN ISO 9001:2015 to secure the administrative quality and to give us the possibility to keep a high accuracy on deliveries.

All material used in System Edström can be recycled to 100%. We are also certified according to SS-EN ISO 14001:2015.



REMEMBER

Now that you have chosen to have System Edström in your vehicle you have taken the first and most important step to make your mobile workshop safe and functional. From here on it is up to you how safe and functional your working place will be.

Remember; You as the driver has the full responsibility if you or any one else is injured if the cargo is poorly secured. It is also your responsibility to make sure that the interior is mounted in the safest way possible whatever your choice of workshop, even if they are professionals with knowhow and long experience.



SECURITY

We crash test our racking continuously at VTI, the Swedish National Road and Transport Research Institute. The crash tests are carried out according to the standard INRS NS 286 which applies to van racking.

Other types of tests are also carried out at test institutes, for example shake tests that simulate several years of use on the road. We also carry out our own tensile and pressure tests, to check, for example, the strength of load securing products.

Find out more about our company and products at www.systemedstrom.com.



Vice

Depth	Width	Height	Kg	Part.No
360	135	140	10,3	5004

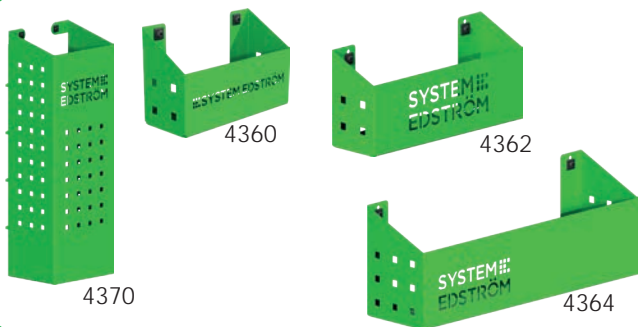
The forged vice is complete with pipe jaw and turning plate. Max opening 140 mm.



Vice Holders

Depth	Width	Height	⇔	Kg	Part.No
1110	170	195	600	9,4	5012
1110	170	80	600	8,9	5013

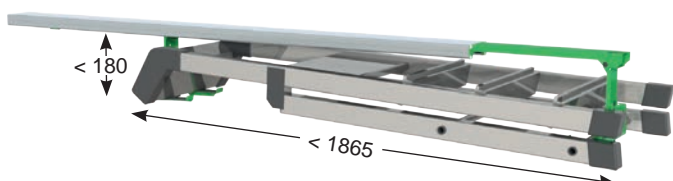
Plate measurement 170x158 mm. Cover 2950 is included.



Pegboard tray

Depth	Width	Height	Kg	Part.No
82	200	80	0,5	4360
82	285	102	0,8	4362
122	455	122	1,5	4364
153	179	575	3,0	4370

A number of different trays that solve (almost) all storage problems.



Internal ladder holder

Length	Kg	Part.No
2000	4,9	T9000

Store your ladder on the inside of the roof, pull it back to the rear door in a simple operation.

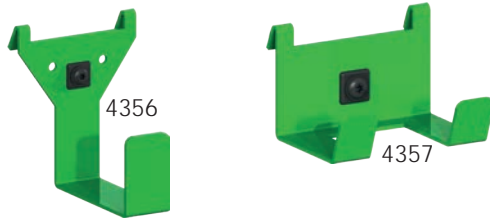


Hose/Cable rack

Depth	Width	Height	Kg	Part.No
79	267	168	0,5	4077

Tube holder

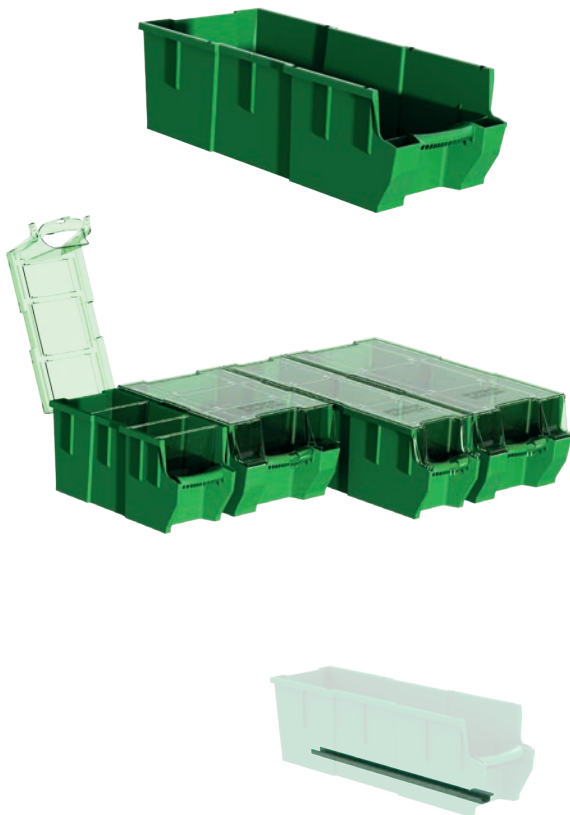
66	194	123	0,4	4349
----	-----	-----	-----	------



Universal hook

Depth	Width	Height	Kg	Part.No
85	80	100	0,2	4356
61	83	55	0,1	4357

Simplicity at its best, heavy duty hooks, to be mount on a pegboard or hang it on the edge of a shelf.



Plastic bin for shelves

Depth	Width	Height	Kg	Part.No
300	145	154	0,4	3050
300	235	154	0,5	3052
470	145	154	0,5	3055
470	235	154	0,5	3057

Transparent lid for plastic bins

Depth	Width	Fits	Kg	Part.No
300	150	3050	0,2	3060
300	240	3052	0,2	3062
470	150	3055	0,2	3065
470	240	3057	0,4	3067

Dividers for plastic bins

Width	Height	Fits	Part.No
140	154	3050, 55	3070
230	154	3052, 57	3072

Bracket for dropfront shelves

Depth	Kg	Part.No
300	0,1	3081
470	0,2	3082



Clothes hook

Depth	Width	Height	Kg	Part.No
31	295	40	0,3	2706
31	465	40	0,5	2708

We call it a clothes hook but, needless to say, you can use it to hang up whatever you want on it.



Strap with brackets

Information	Width	Part.No
1200 mm, nylon strap	25	4365
1000 mm, elastic strap	25	4366

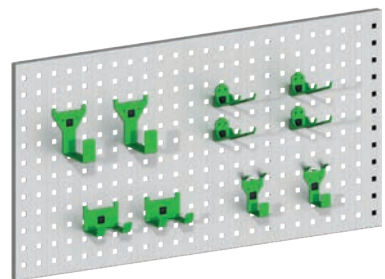
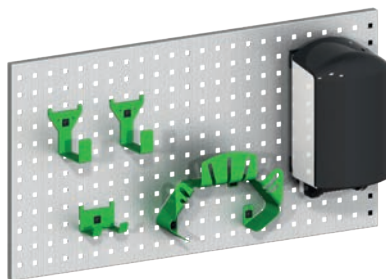
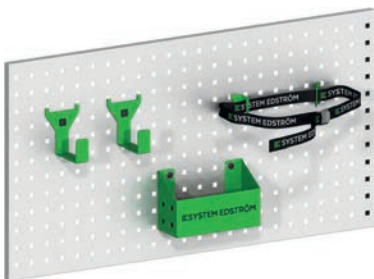
The brackets will fit on our pegboards.



Accessory package No. 1

Accessory package No. 2

Accessory package No. 3



Art Nr

F11001

Pegboard not included.

Art Nr

F11002

Pegboard not included.

Art Nr

F11004

Pegboard not included.

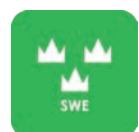
www.systemedstrom.com



WARRANTY



SAFETY



QUALITY

SYSTEM EDSTRÖM

SYSTEM EDSTRÖM BILINREDNINGAR AB
Råseborgsgatan 11
164 74 Kista
Sweden

CONTACT

Order +46 (0)10 102 95 00

Sales +46 (0)10 102 95 01

Switchboard +46 (0)8 590 920 20

info@edstrom.se