



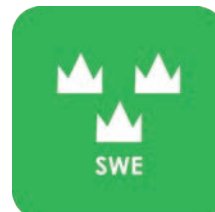
— WE CREATE MOBILE WORKPLACES —

MERCEDES

Citan, Vito & Sprinter



SAFETY



QUALITY



WARRANTY

MERCEDES CITAN L1

For price information, mounting time and content in our van racking packages, scan the QR code on the first page.

On electric and hybrid vans we recommend mounting by an experienced installer. Batteries and cable harnesses for approximately 400 volt must be taken in consideration. Cost of a floor may be added.



Art.No	Length	Depth	Height	Kg	CO ₂
F42320	1239	300	890	23	21



Art.No	Length	Depth	Height	Kg	CO ₂
F42321	848	300	890	17	14



Art.No	Length	Depth	Height	Kg	CO ₂
F42322	1239	300	890	35	46



Art.No	Length	Depth	Height	Kg	CO ₂
F42323	804	300	890	36	45



Art.No	Length	Depth	Height	Kg	CO ₂
F42324	1239	300	890	49	55



Art.No	Length	Depth	Height	Kg	CO ₂
F42325	804	300	890	47	61



Art.No	Length	Depth	Height	Kg	CO ₂
F42334			250	77	118



Art.No	Length	Depth	Height	Kg	CO ₂
F42337			470	75	117

MERCEDES CITAN L2

For price information, mounting time and content in our van racking packages, scan the QR code on the first page.

On electric and hybrid vans we recommend mounting by an experienced installer. Batteries and cable harnesses for approximately 400 volt must be taken in consideration. Cost of a floor may be added.



Art.No	Length	Depth	Height	Kg	CO ₂
F42340	1631	300	890	28	23



Art.No	Length	Depth	Height	Kg	CO ₂
F42341	971	300	890	22	20



Art.No	Length	Depth	Height	Kg	CO ₂
F42342	1631	300	890	42	53



Art.No	Length	Depth	Height	Kg	CO ₂
F42343	894	300	890	36	47



Art.No	Length	Depth	Height	Kg	CO ₂
F42344	1572	300	890	52	47



Art.No	Length	Depth	Height	Kg	CO ₂
F42345	894	300	890	48	63



Art.No	Length	Depth	Height	Kg	CO ₂
F42351			250	89	106



Art.No	Length	Depth	Height	Kg	CO ₂
F42353			470	102	117

MERCEDES VITO L1

For price information, mounting time and content in our van racking packages, scan the QR code on the first page.

On electric and hybrid vans we recommend mounting by an experienced installer. Batteries and cable harnesses for approximately 400 volt must be taken in consideration. Cost of a floor may be added.



Art.No	Length	Depth	Height	Kg	CO ₂
F41700	1875	300	1000	30	21



Art.No	Length	Depth	Height	Kg	CO ₂
F41701	1061	300	1000	21	16



Art.No	Length	Depth	Height	Kg	CO ₂
F41702	1875	300	1000	48	54



Art.No	Length	Depth	Height	Kg	CO ₂
F41703	1107	300	1000	47	51



Art.No	Length	Depth	Height	Kg	CO ₂
F41704	1875	300	1000	57	69



Art.No	Length	Depth	Height	Kg	CO ₂
F41705	1061	300	1000	26	29



Art.No	Length	Depth	Height	Kg	CO ₂
F41716			250	99	155



Art.No	Length	Depth	Height	Kg	CO ₂
F41718			470	108	164

MERCEDES VITO L2

For price information, mounting time and content in our van racking packages, scan the QR code on the first page.

On electric and hybrid vans we recommend mounting by an experienced installer. Batteries and cable harnesses for approximately 400 volt must be taken in consideration. Cost of a floor may be added.



Art.No	Length	Depth	Height	Kg	CO ₂
F41720	2054	300	1000	32	22



Art.No	Length	Depth	Height	Kg	CO ₂
F41721	1240	300	1000	23	17



Art.No	Length	Depth	Height	Kg	CO ₂
F41722	2145	300	1000	57	51



Art.No	Length	Depth	Height	Kg	CO ₂
F41723	1286	300	1000	49	54



Art.No	Length	Depth	Height	Kg	CO ₂
F41724	2054	300	1000	58	65



Art.No	Length	Depth	Height	Kg	CO ₂
F41725	1240	300	1000	28	33



Art.No	Length	Depth	Height	Kg	CO ₂
F41736		250	110	170	



Art.No	Length	Depth	Height	Kg	CO ₂
F41738		470	117	174	

MERCEDES VITO L3

For price information, mounting time and content in our van racking packages, scan the QR code on the first page.

On electric and hybrid vans we recommend mounting by an experienced installer. Batteries and cable harnesses for approximately 400 volt must be taken in consideration. Cost of a floor may be added.



Art.No	Length	Depth	Height	Kg	CO ₂
F41740	2267	300	1000	36	25



Art.No	Length	Depth	Height	Kg	CO ₂
F41741	1453	300	1000	26	19



Art.No	Length	Depth	Height	Kg	CO ₂
F41742	2267	300	1000	53	49



Art.No	Length	Depth	Height	Kg	CO ₂
F41743	1499	300	1000	66	53



Art.No	Length	Depth	Height	Kg	CO ₂
F41744	2267	300	1000	62	68



Art.No	Length	Depth	Height	Kg	CO ₂
F41745	1240	470	1000	38	41



Art.No	Length	Depth	Height	Kg	CO ₂
F41756			250	120	156



Art.No	Length	Depth	Height	Kg	CO ₂
F41758			470	146	186

MERCEDES SPRINTER L1

For price information, mounting time and content in our van racking packages, scan the QR code on the first page.

On electric and hybrid vans we recommend mounting by an experienced installer. Batteries and cable harnesses for approximately 400 volt must be taken in consideration. Cost of a floor may be added.



Art.No	Length	Depth	Height	Kg	CO ₂
F44080	2270	470	1220	53	39



Art.No	Length	Depth	Height	Kg	CO ₂
F44081	1287	300	890	41	50



Art.No	Length	Depth	Height	Kg	CO ₂
F44082	2270	470	1220	84	69



Art.No	Length	Depth	Height	Kg	CO ₂
F44083	1372	300	890	49	49



Art.No	Length	Depth	Height	Kg	CO ₂
F44084	2270	300	1515	82	87



Art.No	Length	Depth	Height	Kg	CO ₂
F44085	1287	300	890	58	71



Art.No	Length	Depth	Height	Kg	CO ₂
F44086	2270	300	1220	91	77



Art.No	Length	Depth	Height	Kg	CO ₂
F44087	1242	470	1220	51	46

MERCEDES SPRINTER L2

For price information, mounting time and content in our van racking packages, scan the QR code on the first page.

On electric and hybrid vans we recommend mounting by an experienced installer. Batteries and cable harnesses for approximately 400 volt must be taken in consideration. Cost of a floor may be added.



Art.No	Length	Depth	Height	Kg	CO ₂
F44040	2841	470	1220	63	45



Art.No	Length	Depth	Height	Kg	CO ₂
F44041	1679	300	890	60	53



Art.No	Length	Depth	Height	Kg	CO ₂
F44042	2841	470	1220	111	95



Art.No	Length	Depth	Height	Kg	CO ₂
F44043	1711	300	1220	78	94



Art.No	Length	Depth	Height	Kg	CO ₂
F44044	2841	300	1735	109	103



Art.No	Length	Depth	Height	Kg	CO ₂
F44045	1778	470	855	153	200



Art.No	Length	Depth	Height	Kg	CO ₂
F44046	3021	470	1510	140	162



Art.No	Length	Depth	Height	Kg	CO ₂
F44047	1242	470	1220	51	46

MERCEDES SPRINTER L3

For price information, mounting time and content in our van racking packages, scan the QR code on the first page.

On electric and hybrid vans we recommend mounting by an experienced installer. Batteries and cable harnesses for approximately 400 volt must be taken in consideration. Cost of a floor may be added.



Art.No	Length	Depth	Height	Kg	CO ₂
F45000	3878	470	1220	83	56



Art.No	Length	Depth	Height	Kg	CO ₂
F45001	2499	300	890	68	61



Art.No	Length	Depth	Height	Kg	CO ₂
F45002	3878	470	1220	145	121



Art.No	Length	Depth	Height	Kg	CO ₂
F45003	2501	300	1220	96	104



Art.No	Length	Depth	Height	Kg	CO ₂
F45004	3878	300	1735	160	129



Art.No	Length	Depth	Height	Kg	CO ₂
F45005	2430	470	855	219	197



Art.No	Length	Depth	Height	Kg	CO ₂
F45006	3894	470	1510	212	207



Art.No	Length	Depth	Height	Kg	CO ₂
F45007	2450	470	1220	83	58

INFORMATION



GENERALLY

The kits include what you see in the drawing as well as installation parts, rubber mats to all shelves and foam to the drawers.

System Edström Bilinredningar AB is certified according to SS-EN ISO 9001:2015 to secure the administrative quality and to give us the possibility to keep a high accuracy on deliveries.

All material used in System Edström can be recycled to 100%. We are also certified according to SS-EN ISO 14001:2015.



REMEMBER

Now that you have chosen to have System Edström in your vehicle you have taken the first and most important step to make your mobile workshop safe and functional. From here on it is up to you how safe and functional your working place will be.

Remember; You as the driver has the full responsibility if you or any one else is injured if the cargo is poorly secured. It is also your responsibility to make sure that the interior is mounted in the safest way possible whatever your choice of workshop, even if they are professionals with knowhow and long experience.



SECURITY

We crash test our racking continuously at VTI, the Swedish National Road and Transport Research Institute. The crash tests are carried out according to the standard INRS NS 286 which applies to van racking.

Other types of tests are also carried out at test institutes, for example shake tests that simulate several years of use on the road. We also carry out our own tensile and pressure tests, to check, for example, the strength of load securing products.

Find out more about our company and products at www.systemedstrom.com.



Vice

Depth	Width	Height	Kg	Part.No
360	135	140	10,3	5004

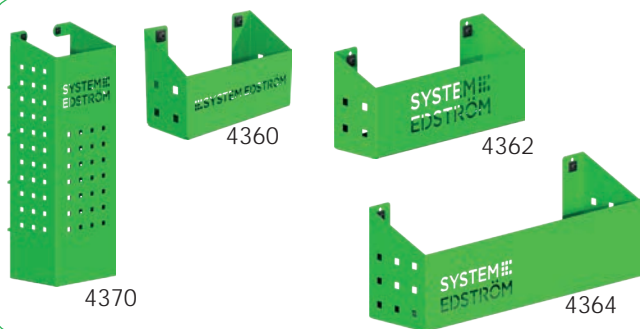
The forged vice is complete with pipe jaw and turning plate. Max opening 140 mm.



Vice Holders

Depth	Width	Height	⇔	Kg	Part.No
1110	170	195	600	9,4	5012
1110	170	80	600	8,9	5013

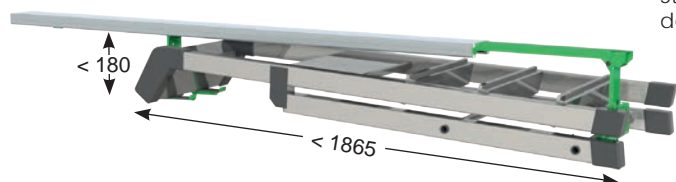
Plate measurement 170x158 mm. Cover 2950 is included.



Pegboard tray

Depth	Width	Height	Kg	Part.No
82	200	80	0,5	4360
82	285	102	0,8	4362
122	455	122	1,5	4364
153	179	575	3,0	4370

A number of different trays that solve (almost) all storage problems.



Internal ladder holder

Length	Kg	Part.No
2000	4,9	T9000

Store your ladder on the inside of the roof, pull it back to the rear door in a simple operation.



Hose/Cable rack

Depth	Width	Height	Kg	Part.No
79	267	168	0,5	4077

Tube holder

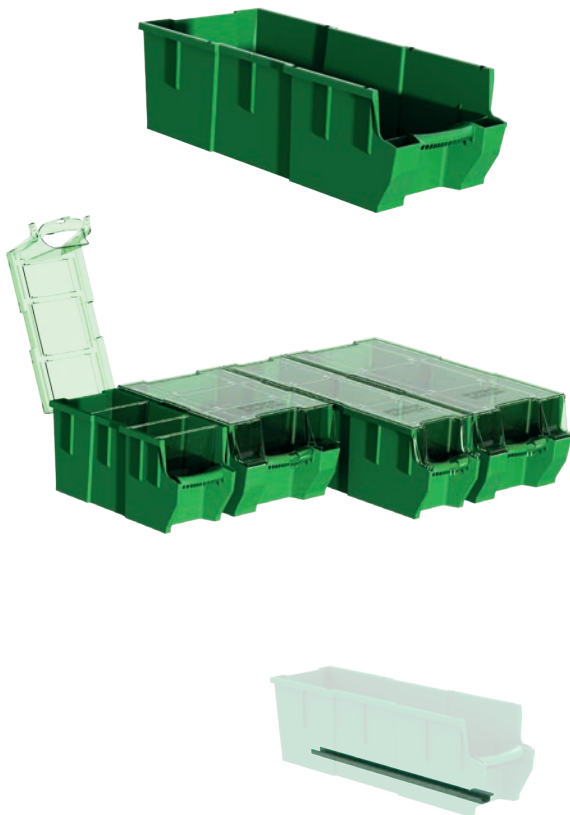
66	194	123	0,4	4349
----	-----	-----	-----	------



Universal hook

Depth	Width	Height	Kg	Part.No
85	80	100	0,2	4356
61	83	55	0,1	4357

Simplicity at its best, heavy duty hooks, to be mount on a pegboard or hang it on the edge of a shelf.



Plastic bin for shelves

Depth	Width	Height	Kg	Part.No
300	145	154	0,4	3050
300	235	154	0,5	3052
470	145	154	0,5	3055
470	235	154	0,5	3057

Transparent lid for plastic bins

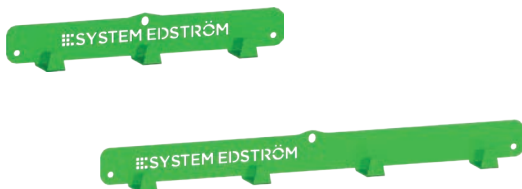
Depth	Width	Fits	Kg	Part.No
300	150	3050	0,2	3060
300	240	3052	0,2	3062
470	150	3055	0,2	3065
470	240	3057	0,4	3067

Dividers for plastic bins

Width	Height	Fits	Part.No
140	154	3050, 55	3070
230	154	3052, 57	3072

Bracket for dropfront shelves

Depth	Kg	Part.No
300	0,1	3081
470	0,2	3082



Clothes hook

Depth	Width	Height	Kg	Part.No
31	295	40	0,3	2706
31	465	40	0,5	2708

We call it a clothes hook but, needless to say, you can use it to hang up whatever you want on it.



Strap with brackets

Information	Width	Part.No
1200 mm, nylon strap	25	4365
1000 mm, elastic strap	25	4366

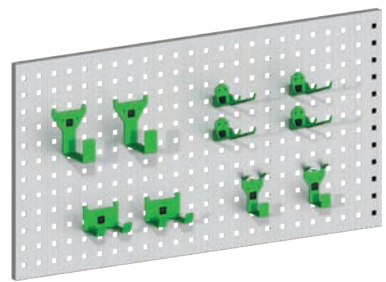
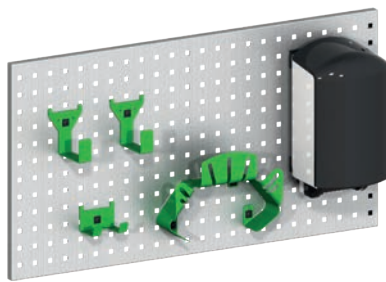
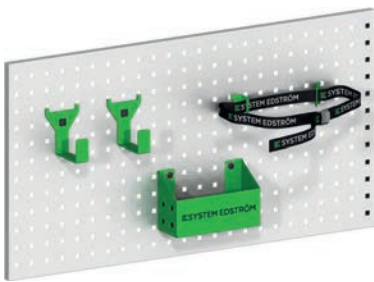
The brackets will fit on our pegboards.



Accessory package No. 1

Accessory package No. 2

Accessory package No. 3



Art Nr

F11001

Pegboard not included.

Art Nr

F11002

Pegboard not included.

Art Nr

F11004

Pegboard not included.

www.systemedstrom.com



WARRANTY



SAFETY



QUALITY

SYSTEM EDSTRÖM

SYSTEM EDSTRÖM BILINREDNINGAR AB
Raseborgsgatan 11
164 74 Kista
Sweden

CONTACT

Order +46 (0)10 102 95 00

Sales +46 (0)10 102 95 01

Switchboard +46 (0)8 590 920 20

info@edstrom.se