



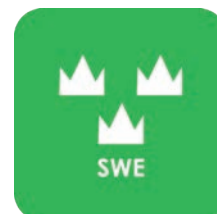
— WE CREATE MOBILE WORKPLACES —

# FORD

Courier, Connect, Custom, Transit & Ranger



**SAFETY**



**QUALITY**



**WARRANTY**

# FORD TRANSIT COURIER 24-

For price information, mounting time and content in our van racking packages, scan the QR code on the first page.

On electric and hybrid vans we recommend mounting by an experienced installer. Batteries and cable harnesses for approximately 400 volt must be taken in consideration. Cost of a floor may be added.



Art.No	Length	Depth	Height	Kg	CO <sub>2</sub>
F49350	1362	300	890	26	20



Art.No	Length	Depth	Height	Kg	CO <sub>2</sub>
F49351	848	300	890	18	16



Art.No	Length	Depth	Height	Kg	CO <sub>2</sub>
F49352	1239	300	890	37	45



Art.No	Length	Depth	Height	Kg	CO <sub>2</sub>
F49353	804	300	890	36	46



Art.No	Length	Depth	Height	Kg	CO <sub>2</sub>
F49354	1350	300	890	53	53



Art.No	Length	Depth	Height	Kg	CO <sub>2</sub>
F49355	804	300	890	58	66



Art.No	Length	Depth	Height	Kg	CO <sub>2</sub>
F49360			250	66	105



Art.No	Length	Depth	Height	Kg	CO <sub>2</sub>
F49362			470	75	117

# FORD TRANSIT CONNECT L1 24-

For price information, mounting time and content in our van racking packages, scan the QR code on the first page.

On electric and hybrid vans we recommend mounting by an experienced installer. Batteries and cable harnesses for approximately 400 volt must be taken in consideration. Cost of a floor may be added.



Art.No	Length	Depth	Height	Kg	CO <sub>2</sub>
F42200	1149	300	890	23	18



Art.No	Length	Depth	Height	Kg	CO <sub>2</sub>
F42201	848	300	890	17	14



Art.No	Length	Depth	Height	Kg	CO <sub>2</sub>
F42202	1149	300	1000	39	43



Art.No	Length	Depth	Height	Kg	CO <sub>2</sub>
F42203	804	300	1000	36	46



Art.No	Length	Depth	Height	Kg	CO <sub>2</sub>
F42204	1239	300	1075	48	48



Art.No	Length	Depth	Height	Kg	CO <sub>2</sub>
F42205	804	300	1000	48	62



Art.No	Length	Depth	Height	Kg	CO <sub>2</sub>
F42240			250	77	118



Art.No	Length	Depth	Height	Kg	CO <sub>2</sub>
F42242			470	89	133

# FORD TRANSIT CONNECT L2 24-

For price information, mounting time and content in our van racking packages, scan the QR code on the first page.

On electric and hybrid vans we recommend mounting by an experienced installer. Batteries and cable harnesses for approximately 400 volt must be taken in consideration. Cost of a floor may be added.



Art.No	Length	Depth	Height	Kg	CO <sub>2</sub>
F42220	1572	300	890	28	20



Art.No	Length	Depth	Height	Kg	CO <sub>2</sub>
F42221	1061	300	890	23	18



Art.No	Length	Depth	Height	Kg	CO <sub>2</sub>
F42222	1631	300	1000	50	53



Art.No	Length	Depth	Height	Kg	CO <sub>2</sub>
F42223	1107	300	890	39	47



Art.No	Length	Depth	Height	Kg	CO <sub>2</sub>
F42224	1631	300	1075	62	64



Art.No	Length	Depth	Height	Kg	CO <sub>2</sub>
F42225	1107	300	890	53	69



Art.No	Length	Depth	Height	Kg	CO <sub>2</sub>
F42245			250	91	109



Art.No	Length	Depth	Height	Kg	CO <sub>2</sub>
F42247			470	103	120

# FORD TRANSIT CUSTOM L1 23-

For price information, mounting time and content in our van racking packages, scan the QR code on the first page.

On electric and hybrid vans we recommend mounting by an experienced installer. Batteries and cable harnesses for approximately 400 volt must be taken in consideration. Cost of a floor may be added.



Art.No	Length	Depth	Height	Kg	CO <sub>2</sub>
F49300	1998	300	1000	38	26



Art.No	Length	Depth	Height	Kg	CO <sub>2</sub>
F49301	1061	300	1000	24	18



Art.No	Length	Depth	Height	Kg	CO <sub>2</sub>
F49302	1998	300	1000	56	51



Art.No	Length	Depth	Height	Kg	CO <sub>2</sub>
F49303	1107	300	1000	47	52



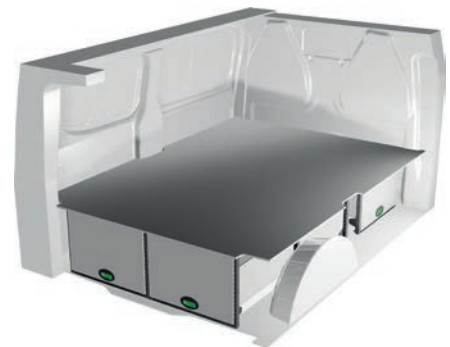
Art.No	Length	Depth	Height	Kg	CO <sub>2</sub>
F49304	1998	300	1140	65	74



Art.No	Length	Depth	Height	Kg	CO <sub>2</sub>
F49305	1107	300	1000	66	75



Art.No	Length	Depth	Height	Kg	CO <sub>2</sub>
F49310			250	119	126

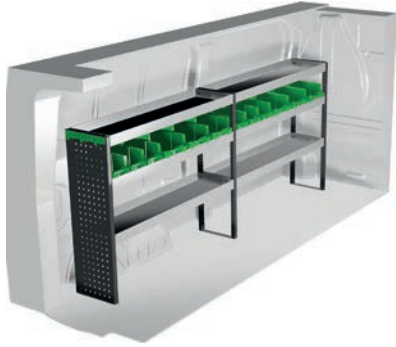


Art.No	Length	Depth	Height	Kg	CO <sub>2</sub>
F49313			470	122	144

# FORD TRANSIT CUSTOM L2 23-

For price information, mounting time and content in our van racking packages, scan the QR code on the first page.

On electric and hybrid vans we recommend mounting by an experienced installer. Batteries and cable harnesses for approximately 400 volt must be taken in consideration. Cost of a floor may be added.



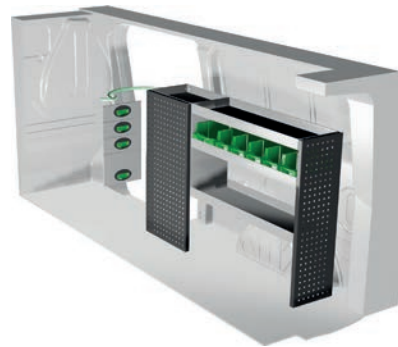
Art.No	Length	Depth	Height	Kg	CO <sub>2</sub>
F49320	2446	300	1000	44	20



Art.No	Length	Depth	Height	Kg	CO <sub>2</sub>
F49321	1453	300	1000	29	21



Art.No	Length	Depth	Height	Kg	CO <sub>2</sub>
F49322	2446	300	1000	62	47



Art.No	Length	Depth	Height	Kg	CO <sub>2</sub>
F49323	1499	300	1000	53	56



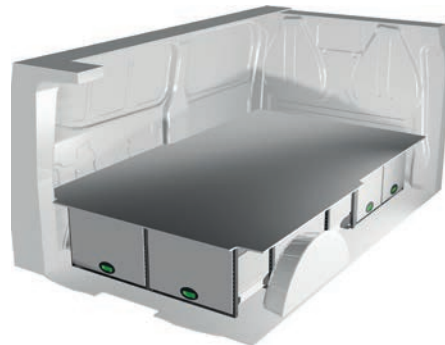
Art.No	Length	Depth	Height	Kg	CO <sub>2</sub>
F49324	2446	300	1140	70	66



Art.No	Length	Depth	Height	Kg	CO <sub>2</sub>
F49325	1499	300	1000	69	78



Art.No	Length	Depth	Height	Kg	CO <sub>2</sub>
F49332			250	135	139



Art.No	Length	Depth	Height	Kg	CO <sub>2</sub>
F49334			470	153	151

# FORD TRANSIT L2H2

For price information, mounting time and content in our van racking packages, scan the QR code on the first page.

On electric and hybrid vans we recommend mounting by an experienced installer. Batteries and cable harnesses for approximately 400 volt must be taken in consideration. Cost of a floor may be added.



Art.No	Length	Depth	Height	Kg	CO <sub>2</sub>
F41330	2448	300	1440	52	20



Art.No	Length	Depth	Height	Kg	CO <sub>2</sub>
F41331	1240	300	1440	32	20



Art.No	Length	Depth	Height	Kg	CO <sub>2</sub>
F41332	2448	300	1440	57	28



Art.No	Length	Depth	Height	Kg	CO <sub>2</sub>
F41333	1240	300	1440	34	28



Art.No	Length	Depth	Height	Kg	CO <sub>2</sub>
F41334	2448	470	1565	73	82



Art.No	Length	Depth	Height	Kg	CO <sub>2</sub>
F41335	1409	300	1000	52	54



Art.No	Length	Depth	Height	Kg	CO <sub>2</sub>
F41336	2448	470	1510	104	118



Art.No	Length	Depth	Height	Kg	CO <sub>2</sub>
F41337	1240	470	920	81	118

# FORD TRANSIT L3H2

For price information, mounting time and content in our van racking packages, scan the QR code on the first page.

On electric and hybrid vans we recommend mounting by an experienced installer. Batteries and cable harnesses for approximately 400 volt must be taken in consideration. Cost of a floor may be added.



Art.No	Length	Depth	Height	Kg	CO <sub>2</sub>
F41350	2840	300	1440	58	32



Art.No	Length	Depth	Height	Kg	CO <sub>2</sub>
F41351	1240	470	1000	63	71



Art.No	Length	Depth	Height	Kg	CO <sub>2</sub>
F41352	2840	300	1440	82	63



Art.No	Length	Depth	Height	Kg	CO <sub>2</sub>
F41353	1710	470	855	105	138



Art.No	Length	Depth	Height	Kg	CO <sub>2</sub>
F41354	2840	300	1670	97	89



Art.No	Length	Depth	Height	Kg	CO <sub>2</sub>
F41355	1632	300	1440	59	58



Art.No	Length	Depth	Height	Kg	CO <sub>2</sub>
F41356	3053	300	1220	112	99



Art.No	Length	Depth	Height	Kg	CO <sub>2</sub>
F41357	1632	470	1220	45	34

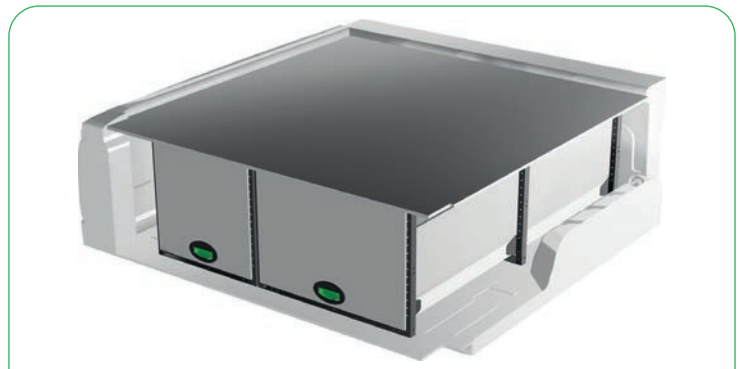
# FORD RANGER

For price information, mounting time and content in our van racking packages, scan the QR code on the first page.

On electric and hybrid vans we recommend mounting by an experienced installer. Batteries and cable harnesses for approximately 400 volt must be taken in consideration. Cost of a floor may be added.



Art.No	Length	Depth	Height	Kg	CO <sub>2</sub>
F45216		250	66	105	



Art.No	Length	Depth	Height	Kg	CO <sub>2</sub>
F45217		470	75	117	



## GENERALLY

The kits include what you see in the drawing as well as installation parts, rubber mats to all shelves and foam to the drawers.

System Edström Bilinredningar AB is certified according to SS-EN ISO 9001:2015 to secure the administrative quality and to give us the possibility to keep a high accuracy on deliveries.

All material used in System Edström can be recycled to 100%. We are also certified according to SS-EN ISO 14001:2015.



## REMEMBER

Now that you have chosen to have System Edström in your vehicle you have taken the first and most important step to make your mobile workshop safe and functional. From here on it is up to you how safe and functional your working place will be.

Remember; You as the driver has the full responsibility if you or any one else is injured if the cargo is poorly secured. It is also your responsibility to make sure that the interior is mounted in the safest way possible whatever your choice of workshop, even if they are professionals with knowhow and long experience.

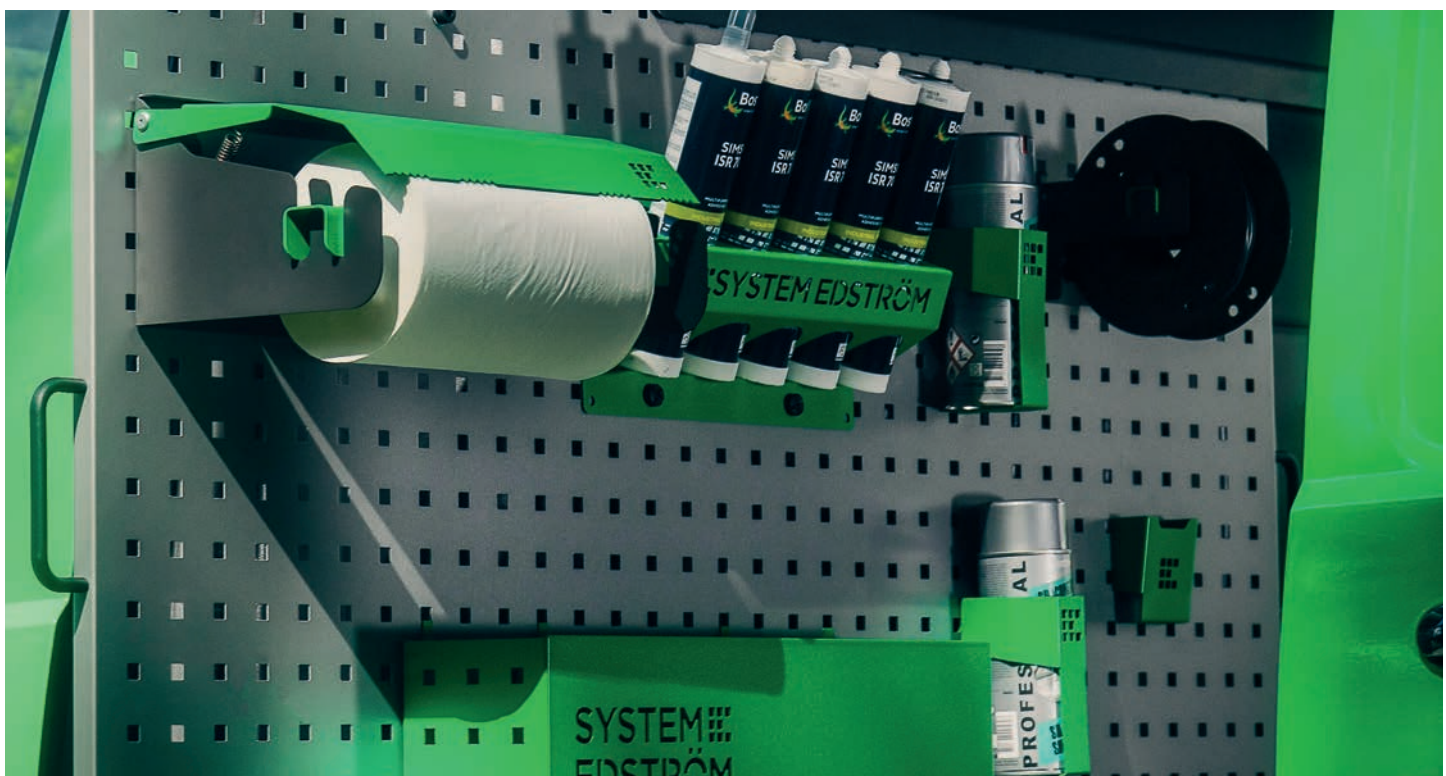


## SECURITY

We crash test our racking continuously at VTI, the Swedish National Road and Transport Research Institute. The crash tests are carried out according to the standard INRS NS 286 which applies to van racking.

Other types of tests are also carried out at test institutes, for example shake tests that simulate several years of use on the road. We also carry out our own tensile and pressure tests, to check, for example, the strength of load securing products.

Find out more about our company and products at [www.systemedstrom.com](http://www.systemedstrom.com).





### Vice

Depth	Width	Height	Kg	Part.No
360	135	140	10,3	5004

The forged vice is complete with pipe jaw and turning plate. Max opening 140 mm.



### Vice Holders

Depth	Width	Height	⇄	Kg	Part.No
1110	170	195	600	9,4	5012
1110	170	80	600	8,9	5013

Plate measurement 170x158 mm. Cover 2950 is included.



### Gas bottle holder adjustable

Depth	Width	Height	Tube Ø	Kg	Part.No
150	300	97	< 300	0,9	2910

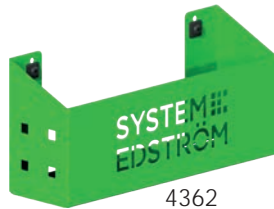
Liquefied petroleum gas P6 (bottles with 320 mm Ø can be stored after modification).



4370



4360



4362

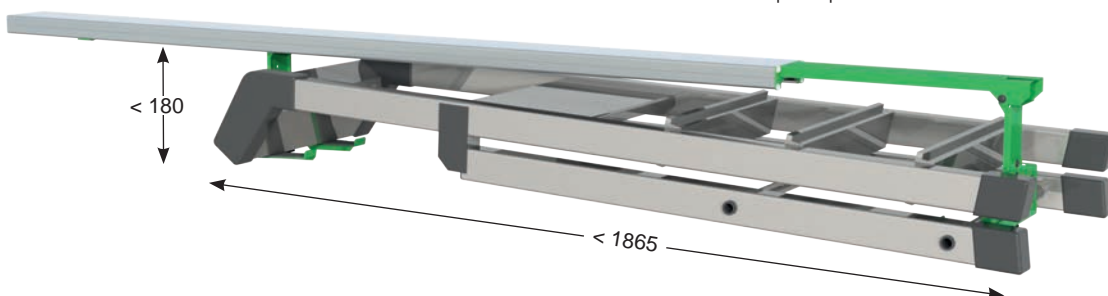


4364

### Pegboard tray

Depth	Width	Height	Kg	Part.No
82	200	80	0,5	4360
82	285	102	0,8	4362
122	455	122	1,5	4364
153	179	575	3,0	4370

A number of different trays that solve (almost) all storage problems.



### Internal ladder holder

Length	Kg	Part.No
2000	4,9	T9000

Store your ladder on the inside of the roof, pull it back to the rear door in a simple operation.



### Hose/Cable rack

Depth	Width	Height	Kg	Part.No
79	267	168	0,5	4077

### Tube holder

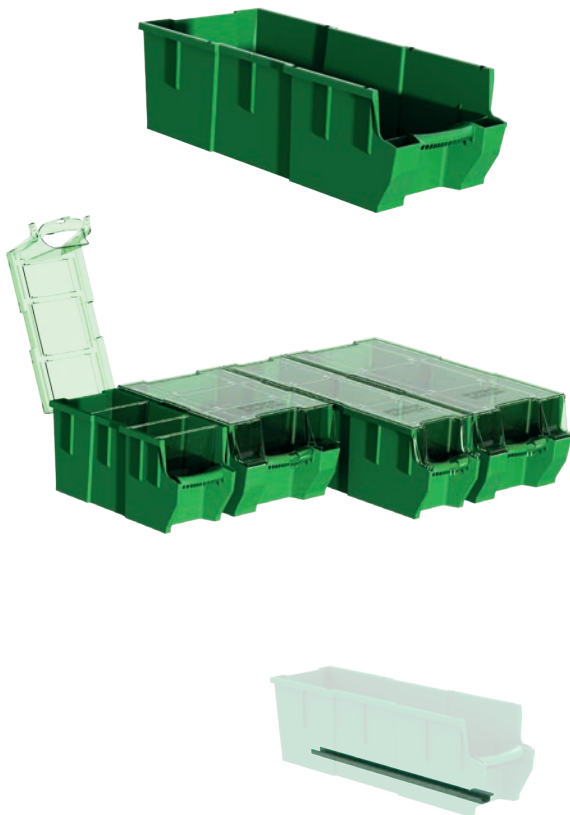
66	194	123	0,4	4349
----	-----	-----	-----	------



### Universal hook

Depth	Width	Height	Kg	Part.No
85	80	100	0,2	4356
61	83	55	0,1	4357

Simplicity at its best, heavy duty hooks, to be mount on a pegboard or hang it on the edge of a shelf.



### Plastic bin for shelves

Depth	Width	Height	Kg	Part.No
300	145	154	0,4	3050
300	235	154	0,5	3052
470	145	154	0,5	3055
470	235	154	0,5	3057

### Transparent lid for plastic bins

Depth	Width	Fits	Kg	Part.No
300	150	3050	0,2	3060
300	240	3052	0,2	3062
470	150	3055	0,2	3065
470	240	3057	0,4	3067

### Dividers for plastic bins

Width	Height	Fits	Part.No
140	154	3050, 55	3070
230	154	3052, 57	3072

### Bracket for dropfront shelves

Depth	Kg	Part.No
300	0,1	3081
470	0,2	3082



### Clothes hook

Depth	Width	Height	Kg	Part.No
31	295	40	0,3	2706
31	465	40	0,5	2708

We call it a clothes hook but, needless to say, you can use it to hang up whatever you want on it.



### Strap with brackets

Information	Width	Part.No
1200 mm, nylon strap	25	4365
1000 mm, elastic strap	25	4366

The brackets will fit on our pegboards.

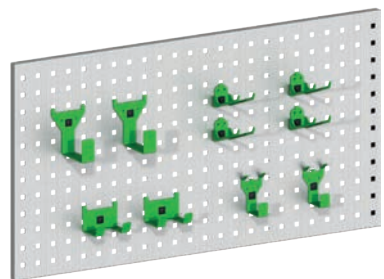
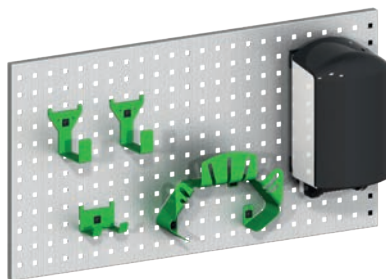
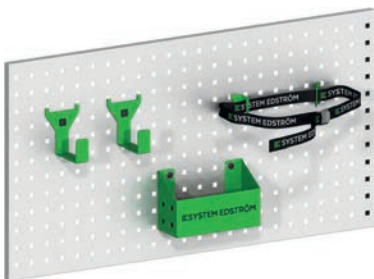




### Accessory package No. 1

### Accessory package No. 2

### Accessory package No. 3



Art Nr

F11001

*Pegboard not included.*

Art Nr

F11002

*Pegboard not included.*

Art Nr

F11004

*Pegboard not included.*

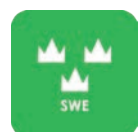
[www.systemedstrom.com](http://www.systemedstrom.com)



WARRANTY



SAFETY



QUALITY

# SYSTEM EDSTRÖM

SYSTEM EDSTRÖM BILINREDNINGAR AB  
Raseborgsgatan 11  
164 74 Kista  
Sweden

CONTACT  
Order +46 (0)10 102 95 00  
Sales +46 (0)10 102 95 01  
Switchboard +46 (0)8 590 920 20  
[info@edstrom.se](mailto:info@edstrom.se)