



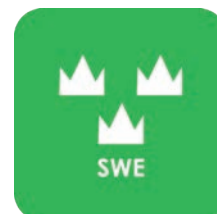
— WE CREATE MOBILE WORKPLACES —

FIAT

Doblò, Scudo & Ducato



SAFETY



QUALITY



WARRANTY

FIAT DOBLÒ

For price information, mounting time and content in our van racking packages, scan the QR code on the first page.

On electric and hybrid vans we recommend mounting by an experienced installer. Batteries and cable harnesses for approximately 400 volt must be taken in consideration. Cost of a floor may be added.



Art.No	Length	Depth	Height	Kg	CO ₂
F43100	1239	300	890	22	17



Art.No	Length	Depth	Height	Kg	CO ₂
F43101	724	300	890	33	36



Art.No	Length	Depth	Height	Kg	CO ₂
F43102	1285	300	890	55	50



Art.No	Length	Depth	Height	Kg	CO ₂
F43103	848	300	890	19	18



Art.No	Length	Depth	Height	Kg	CO ₂
F43104	1239	300	890	39	51



Art.No	Length	Depth	Height	Kg	CO ₂
F43105	939	300	890	46	48



Art.No	Length	Depth	Height	Kg	CO ₂
F43114			250	75	115



Art.No	Length	Depth	Height	Kg	CO ₂
F43117			470	89	133

FIAT DOBLÒ MAXI

For price information, mounting time and content in our van racking packages, scan the QR code on the first page.

On electric and hybrid vans we recommend mounting by an experienced installer. Batteries and cable harnesses for approximately 400 volt must be taken in consideration. Cost of a floor may be added.



Art.No	Length	Depth	Height	Kg	CO ₂
F43120	1662	300	890	25	14



Art.No	Length	Depth	Height	Kg	CO ₂
F43121	1138	300	890	55	49



Art.No	Length	Depth	Height	Kg	CO ₂
F43122	1619	300	890	56	58



Art.No	Length	Depth	Height	Kg	CO ₂
F43123	1138	300	1000	51	55



Art.No	Length	Depth	Height	Kg	CO ₂
F43124	1662	300	890	48	42



Art.No	Length	Depth	Height	Kg	CO ₂
F43125	1107	300	890	70	61



Art.No	Length	Depth	Height	Kg	CO ₂
F43134		250		85	105

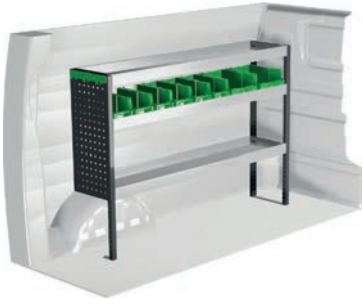


Art.No	Length	Depth	Height	Kg	CO ₂
F43137			470	100	120

FIAT SCUDO L1

For price information, mounting time and content in our van racking packages, scan the QR code on the first page.

On electric and hybrid vans we recommend mounting by an experienced installer. Batteries and cable harnesses for approximately 400 volt must be taken in consideration. Cost of a floor may be added.



Art.No	Length	Depth	Height	Kg	CO ₂
F42100	1452	300	1000	27	23



Art.No	Length	Depth	Height	Kg	CO ₂
F42101	758	300	1000	17	14



Art.No	Length	Depth	Height	Kg	CO ₂
F42102	1452	300	890	40	51



Art.No	Length	Depth	Height	Kg	CO ₂
F42103	726	300	890	28	39



Art.No	Length	Depth	Height	Kg	CO ₂
F42104	1452	300	1000	46	68



Art.No	Length	Depth	Height	Kg	CO ₂
F42105	726	300	890	40	52



Art.No	Length	Depth	Height	Kg	CO ₂
F42111			250	85	105

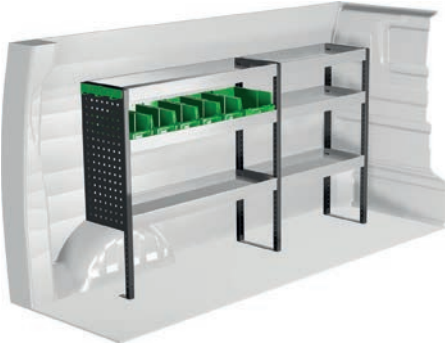


Art.No	Length	Depth	Height	Kg	CO ₂
F42115			470	100	120

FIAT SCUDO L2

For price information, mounting time and content in our van racking packages, scan the QR code on the first page.

On electric and hybrid vans we recommend mounting by an experienced installer. Batteries and cable harnesses for approximately 400 volt must be taken in consideration. Cost of a floor may be added.



Art.No	Length	Depth	Height	Kg	CO ₂
F42120	1785	300	1000	31	25



Art.No	Length	Depth	Height	Kg	CO ₂
F42121	1061	300	1000	23	23



Art.No	Length	Depth	Height	Kg	CO ₂
F42122	1785	300	890	44	47



Art.No	Length	Depth	Height	Kg	CO ₂
F42123	1107	300	890	39	47



Art.No	Length	Depth	Height	Kg	CO ₂
F42124	1785	300	1000	52	67



Art.No	Length	Depth	Height	Kg	CO ₂
F42125	1107	300	890	53	69



Art.No	Length	Depth	Height	Kg	CO ₂
F42134			250	99	152



Art.No	Length	Depth	Height	Kg	CO ₂
F42136			470	123	186

FIAT SCUDO L3

For price information, mounting time and content in our van racking packages, scan the QR code on the first page.

On electric and hybrid vans we recommend mounting by an experienced installer. Batteries and cable harnesses for approximately 400 volt must be taken in consideration. Cost of a floor may be added.



Art.No	Length	Depth	Height	Kg	CO ₂
F42140	2054	300	1000	34	27



Art.No	Length	Depth	Height	Kg	CO ₂
F42141	1453	300	1000	28	26



Art.No	Length	Depth	Height	Kg	CO ₂
F42142	2054	300	890	49	48



Art.No	Length	Depth	Height	Kg	CO ₂
F42143	1440	300	1000	55	55



Art.No	Length	Depth	Height	Kg	CO ₂
F42144	2054	300	1000	56	69



Art.No	Length	Depth	Height	Kg	CO ₂
F42145	1440	300	890	63	83



Art.No	Length	Depth	Height	Kg	CO ₂
F42154			250	105	160



Art.No	Length	Depth	Height	Kg	CO ₂
F42156			470	129	195

FIAT DUCATO L1H1

For price information, mounting time and content in our van racking packages, scan the QR code on the first page.

On electric and hybrid vans we recommend mounting by an experienced installer. Batteries and cable harnesses for approximately 400 volt must be taken in consideration. Cost of a floor may be added.



Art.No	Length	Depth	Height	Kg	CO ₂
F45020	2270	470	1220	53	39



Art.No	Length	Depth	Height	Kg	CO ₂
F45021	1287	300	1000	42	51



Art.No	Length	Depth	Height	Kg	CO ₂
F45022	2355	470	1220	84	69



Art.No	Length	Depth	Height	Kg	CO ₂
F45023	1372	300	1000	50	50



Art.No	Length	Depth	Height	Kg	CO ₂
F45024	2270	300	1515	82	90



Art.No	Length	Depth	Height	Kg	CO ₂
F45025	1287	300	1000	59	73



Art.No	Length	Depth	Height	Kg	CO ₂
F45026	2358	300	1788	67	54



Art.No	Length	Depth	Height	Kg	CO ₂
F45027	1284	300	1788	39	34

FIAT DUCATO L2H2

For price information, mounting time and content in our van racking packages, scan the QR code on the first page.

On electric and hybrid vans we recommend mounting by an experienced installer. Batteries and cable harnesses for approximately 400 volt must be taken in consideration. Cost of a floor may be added.



Art.No	Length	Depth	Height	Kg	CO ₂
F45040	2662	470	1220	59	42



Art.No	Length	Depth	Height	Kg	CO ₂
F45041	1500	300	1000	64	55



Art.No	Length	Depth	Height	Kg	CO ₂
F45042	2747	470	1220	91	74



Art.No	Length	Depth	Height	Kg	CO ₂
F45043	1532	300	1220	80	92



Art.No	Length	Depth	Height	Kg	CO ₂
F45044	2662	300	1735	101	99



Art.No	Length	Depth	Height	Kg	CO ₂
F45045	1509	470	855	105	166



Art.No	Length	Depth	Height	Kg	CO ₂
F45046	2750	470	1788	83	87



Art.No	Length	Depth	Height	Kg	CO ₂
F45047	1497	470	1788	48	51

FIAT DUCATO L3H2

For price information, mounting time and content in our van racking packages, scan the QR code on the first page.

On electric and hybrid vans we recommend mounting by an experienced installer. Batteries and cable harnesses for approximately 400 volt must be taken in consideration. Cost of a floor may be added.



Art.No	Length	Depth	Height	Kg	CO ₂
F45060	3120	470	1220	72	24



Art.No	Length	Depth	Height	Kg	CO ₂
F45061	1892	300	1000	69	57



Art.No	Length	Depth	Height	Kg	CO ₂
F45062	3086	470	1220	116	82



Art.No	Length	Depth	Height	Kg	CO ₂
F45063	1924	300	1220	86	96



Art.No	Length	Depth	Height	Kg	CO ₂
F45064	3265	300	1735	142	106



Art.No	Length	Depth	Height	Kg	CO ₂
F45065	2024	470	855	151	210



Art.No	Length	Depth	Height	Kg	CO ₂
F45066	3253	470	1788	104	51



Art.No	Length	Depth	Height	Kg	CO ₂
F45067	1966	470	1788	67	70

FIAT DUCATO L4H2

For price information, mounting time and content in our van racking packages, scan the QR code on the first page.

On electric and hybrid vans we recommend mounting by an experienced installer. Batteries and cable harnesses for approximately 400 volt must be taken in consideration. Cost of a floor may be added.



Art.No	Length	Depth	Height	Kg	CO ₂
F45080	3512	470	1220	78	40



Art.No	Length	Depth	Height	Kg	CO ₂
F45081	2284	300	1000	102	84



Art.No	Length	Depth	Height	Kg	CO ₂
F45082	3597	470	1220	141	103



Art.No	Length	Depth	Height	Kg	CO ₂
F45083	2316	300	1220	118	108



Art.No	Length	Depth	Height	Kg	CO ₂
F45084	3512	300	1735	157	113



Art.No	Length	Depth	Height	Kg	CO ₂
F45085	2383	470	855	215	250



Art.No	Length	Depth	Height	Kg	CO ₂
F45086	3645	470	1788	112	83



Art.No	Length	Depth	Height	Kg	CO ₂
F45087	2358	470	1788	75	78

INFORMATION



GENERALLY

The kits include what you see in the drawing as well as installation parts, rubber mats to all shelves and foam to the drawers.

System Edström Bilinredningar AB is certified according to SS-EN ISO 9001:2015 to secure the administrative quality and to give us the possibility to keep a high accuracy on deliveries.

All material used in System Edström can be recycled to 100%. We are also certified according to SS-EN ISO 14001:2015.



REMEMBER

Now that you have chosen to have System Edström in your vehicle you have taken the first and most important step to make your mobile workshop safe and functional. From here on it is up to you how safe and functional your working place will be.

Remember;
You as the driver has the full responsibility if you or any one else is injured if the cargo is poorly secured. It is also your responsibility to make sure that the interior is mounted in the safest way possible whatever your choice of workshop, even if they are professionals with knowhow and long experience.



SECURITY

We crash test our racking continuously at VTI, the Swedish National Road and Transport Research Institute. The crash tests are carried out according to the standard INRS NS 286 which applies to van racking.

Other types of tests are also carried out at test institutes, for example shake tests that simulate several years of use on the road. We also carry out our own tensile and pressure tests, to check, for example, the strength of load securing products.

Find out more about our company and products at www.systemedstrom.com.



Vice

Depth	Width	Height	Kg	Part.No
360	135	140	10,3	5004

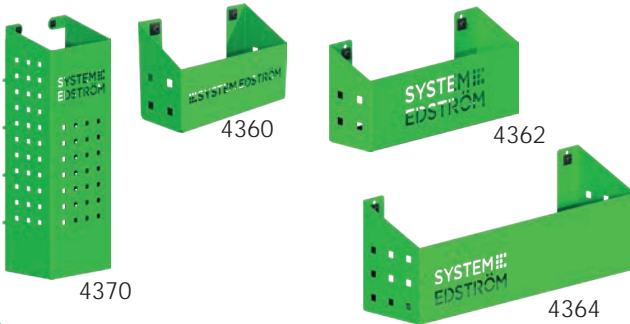
The forged vice is complete with pipe jaw and turning plate. Max opening 140 mm.



Vice Holders

Depth	Width	Height	⇔	Kg	Part.No
1110	170	195	600	9,4	5012
1110	170	80	600	8,9	5013

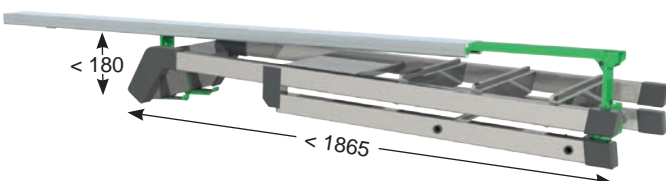
Plate measurement 170x158 mm. Cover 2950 is included.



Pegboard tray

Depth	Width	Height	Kg	Part.No
82	200	80	0,5	4360
82	285	102	0,8	4362
122	455	122	1,5	4364
153	179	575	3,0	4370

A number of different trays that solve (almost) all storage problems.



Internal ladder holder

Length	Kg	Part.No
2000	4,9	T9000

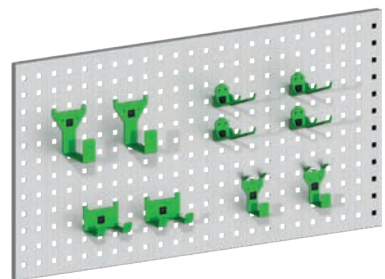
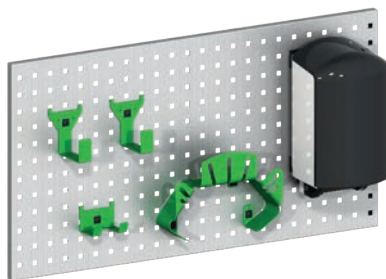
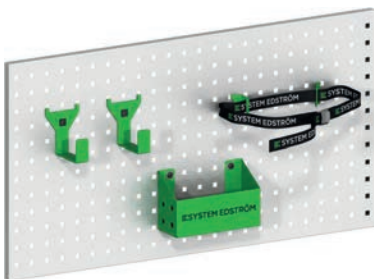
Store your ladder on the inside of the roof, pull it back to the rear door in a simple operation.



Accessory package No. 1

Accessory package No. 2

Accessory package No. 3



Art Nr

F11001

Pegboard not included.

Art Nr

F11002

Pegboard not included.

Art Nr

F11004

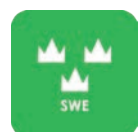
Pegboard not included.



WARRANTY



SAFETY



QUALITY

www.systemedstrom.com

**SYSTEM
EDSTRÖM**

SYSTEM EDSTRÖM BILINREDNINGAR AB
Raseborgsgatan 11
164 74 Kista
Sweden

CONTACT
Order +46 (0)10 102 95 00
Sales +46 (0)10 102 95 01
Switchboard +46 (0)8 590 920 20
info@edstrom.se